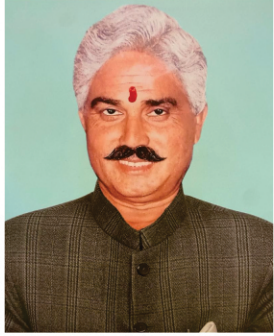




**PROCESS & HEATING**

*SINCE 1970*

## COMPANY PROFILE



In the early **1970s**, our founder, **Sh. Roshan Lal Sharma**, started working as a boiler technician in Amritsar. His vision, so strong, transformed this boiler repairing unit to a boiler production company, Steamtech has manufactured over 6000 boilers, waterwall membranes and other accessories. Steamtech further increased its investment in equipment, expanded its manufacturing space and introduced new technologies in the years that followed. Now it has 50% automated process of manufacturing.

Steamtech is committed to designing and manufacturing steam boilers and allied parts. Founded with over 50 years of experience in the boiler industry, the company blends modern technology with extensive technical know-how to create imaginative products to serve customers' needs. We have come up with technological marvels in direct & indirect process heat requirements by introducing suitably designed steam boilers and their accessories. Finding answers to the energy problems of industries is important to the company. Major efforts by the company's R&D have led to the development of more efficient techniques for hassle-free running of the boiler system. Today, Steamtech offers a wide range of standardised and customised thermal systems suitable for different types of fuels and needs.

### OUR VALUES

We continue to rely on the following core values to guide our business regardless of what type of transaction we might be looking at:

- Professionalism
  - Accountability
  - Integrity
  - Dedication
- 24X7 Customer Service

**434+**  
HAPPY  
CLIENTS

**6000+**  
MANUFACTURED  
BOILERS & PARTS

**2000+**  
MODIFICATION &  
ERECTION

# OUR PORTFOLIO

THE CURRENT SERVICES OF THE COMPANY INCLUDE BUT ARE NOT LIMITED TO:



## INDUSTRIAL STEAM BOILERS

- ♦ VERTICAL BOILERS
- ♦ OIL/GAS FIRED BOILERS
- ♦ WOOD/BIOMASS-FIRED BOILERS
- ♦ HUSK/COAL-FIRED BOILERS
- ♦ AGRO WASTE-FIRED BOILERS
- ♦ POWER BOILERS



## PRESSURE PARTS & ACCESSORIES

- ♦ WATERWALL PANELS
- ♦ BOILER BANK TUBES
- ♦ INBED COIL HEADERS
- ♦ ECONOMISER COILS
- ♦ SUPERHEATER COILS
- ♦ PRESSURE VESSEL



## STEAM VALVES AND ACCESSORIES

- ♦ VALVES AND TRAPS
- ♦ CONTROL VALVES
- ♦ PRESSURE REDUCING STATION
- ♦ CONDENSATE RECOVERY SYSTEM



## BOILER PARTS & ACCESSORIES

- |                   |          |
|-------------------|----------|
| ♦ FLUIDIZED BED   | ♦ ID FAN |
| ♦ BED NOZZLES     | ♦ FD FAN |
| ♦ BOILER CHIMNEY  | ♦ PA FAN |
| ♦ DEAERATOR TANK  | ♦ SA FAN |
| ♦ AIR PREHEATER   |          |
| ♦ WATER PREHEATER |          |



# OUR PORTFOLIO

THE CURRENT SERVICES OF THE COMPANY INCLUDE BUT ARE NOT LIMITED TO:



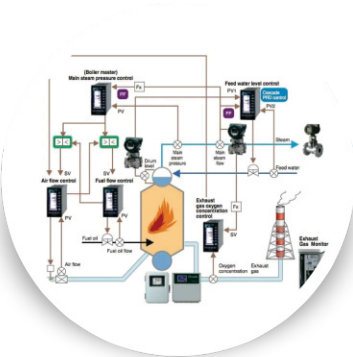
## AIR POLLUTION CONTROL DEVICES

- ◆ BAG FILTER
- ◆ ESP
- ◆ SINGLE/ TWINCYCLONE
- ◆ TREMACYCLONE
- ◆ MULTI CYCLONE
- ◆ WET SCRUBBER



## BOILER MODIFICATION/ERECTION/REPAIR

- ◆ CAPACITY AND EFFICIENCY ENHANCEMENT
- ◆ FURNACE MODIFICATION
- ◆ CHANGE OF FUEL FEEDING AND FIRING



## BOILER AUTOMATION AND AUDITING

- ◆ OVERHAUL AUTOMATION OF BOILER ROOM WITH SCADA
- ◆ DESIGNING OF STEAM & CONDENSATE ULD



# INDUSTRIAL STEAM BOILERS



## **ECONOMAX**

Capacity : 100 to 1000 Kg/Hr  
Fuel : Oil/Gas



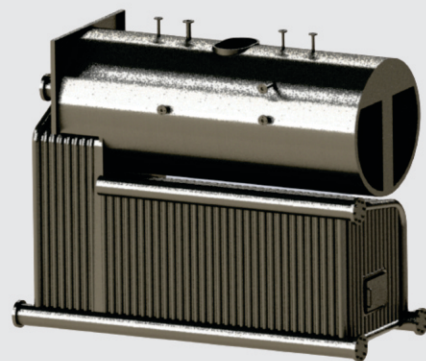
## **WOODPAC MINI**

Capacity : 50 to 1500 Kg/Hr  
Fuel : Wood/Briquette



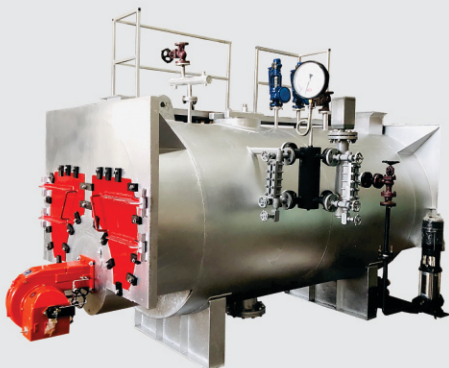
## **WOODPAC SERIES**

Capacity : 300 to 5000 Kg/Hr  
Fuel : Wood/Briquette



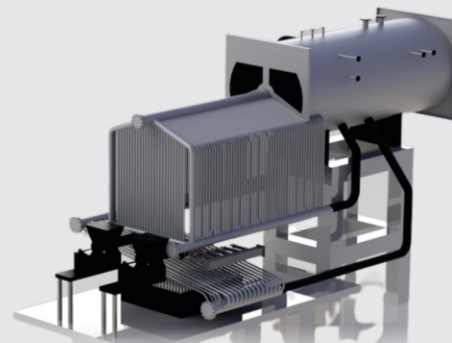
## **HYBRID SERIES**

Capacity : 1000 to 5000 Kg/Hr  
Fuel : Solid Fuel/Biomass Fuel



## **OILPAC / GASPAC**

Capacity : 1 to 20 TPH  
Fuel : Oil/Gas



## **MULTIMAX SERIES**

Capacity : 1 to 20 TPH  
Fuel : Solid Fuel/Biomass Fuel

**NOTE : CAPACITY/FUEL/PRESSURE CAN BE CUSTOMISED FOR CUSTOM NEEDS**

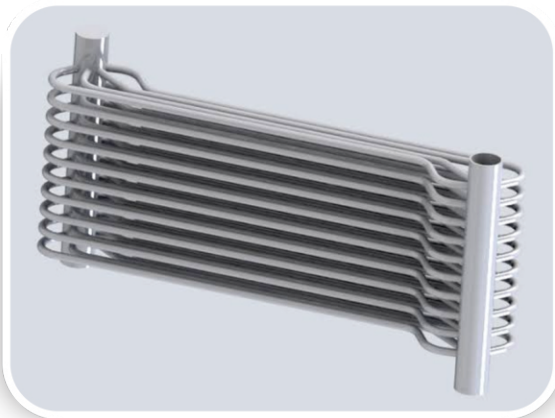
## **PRESSURE PARTS & ACCESSORIES**



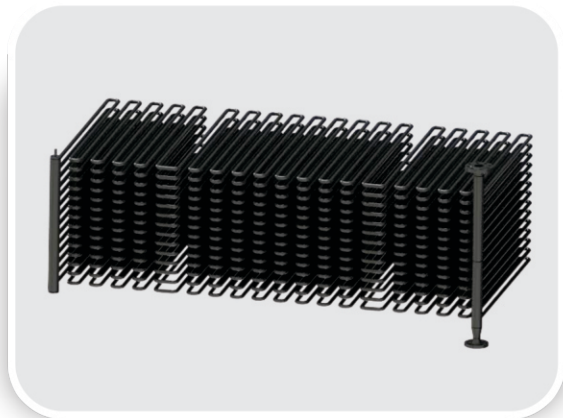
**WATERWALL PANELS**



**BOILER BANK TUBES**



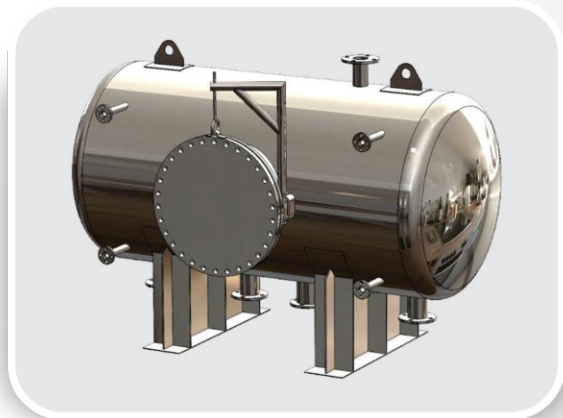
**INBED COIL HEADERS**



**ECONOMISER COILS**



**SUPERHEATER COILS**



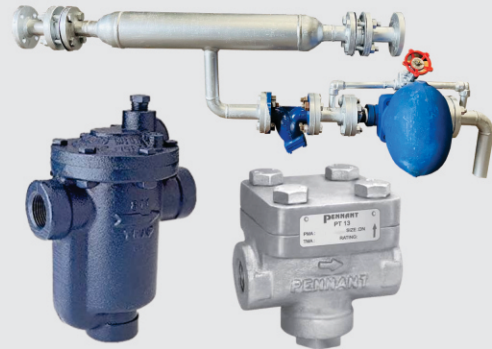
**PRESSURE VESSEL**

**NOTE : CAPACITY/FUEL/PRESSURE CAN BE CUSTOMISED FOR CUSTOM NEEDS**

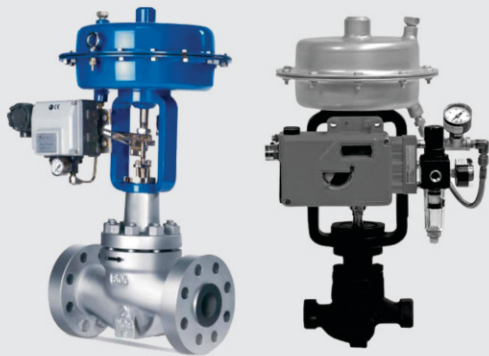
# STEAM VALVES AND ACCESSORIES



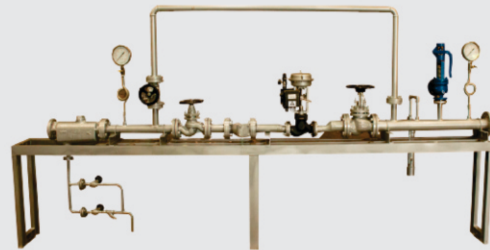
**VALVES**



**TRAPS**



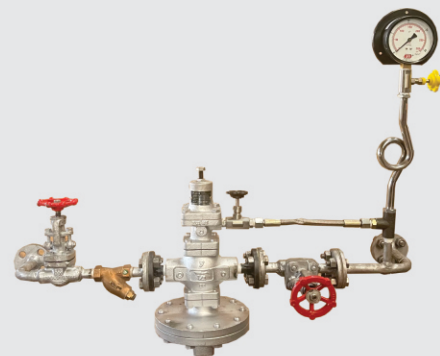
**CONTROL VALVES**



**PRESSURE REDUCING  
STATION**



**CONDENSATE RECOVERY  
SYSTEM**

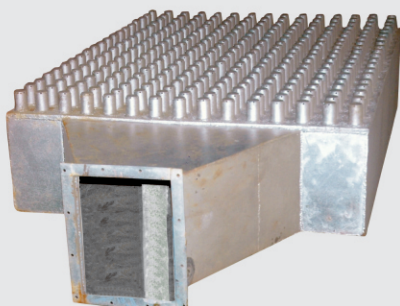


**PRESSURE OPTIMIZATION  
SYSTEM**

**NOTE : CAPACITY/FUEL/PRESSURE CAN BE CUSTOMISED FOR CUSTOM NEEDS**



## BOILER PARTS & ACCESSORIES



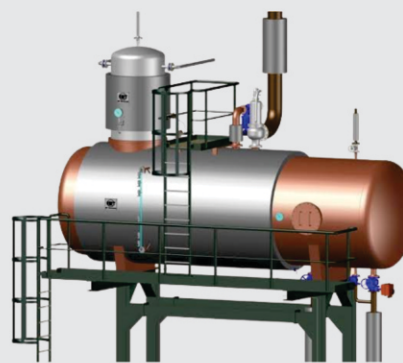
**FLUIDIZED BED**



**BED NOZZLES**



**BOILER CHIMNEY & PARTS**



**DEAERATOR TANK**



**AIR PREHEATER**



**BOILER FANS**

**NOTE : CAPACITY/FUEL/PRESSURE CAN BE CUSTOMISED FOR CUSTOM NEEDS**

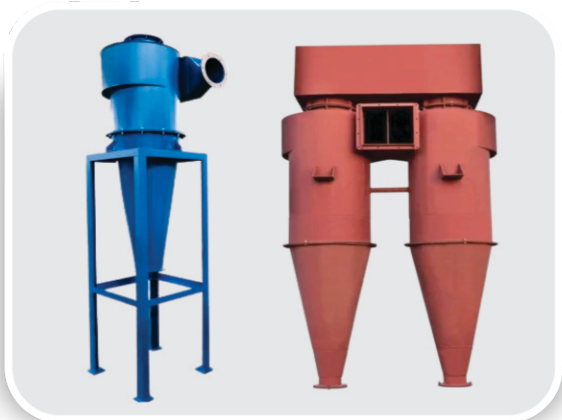
## AIR POLLUTION CONTROL DEVICES



**BAG FILTER**



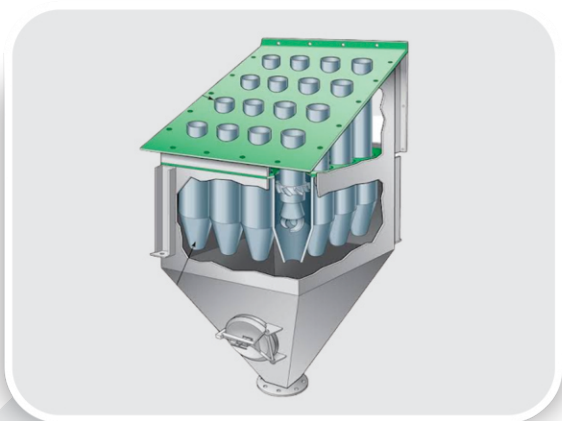
**ESP**



**SINGLE/ TWIN CYCLONE**



**TREMACYCLONE**



**MULTI CYCLONE**



**WET SCRUBBER**

**NOTE : CAPACITY/FUEL/PRESSURE CAN BE CUSTOMISED FOR CUSTOM NEEDS**



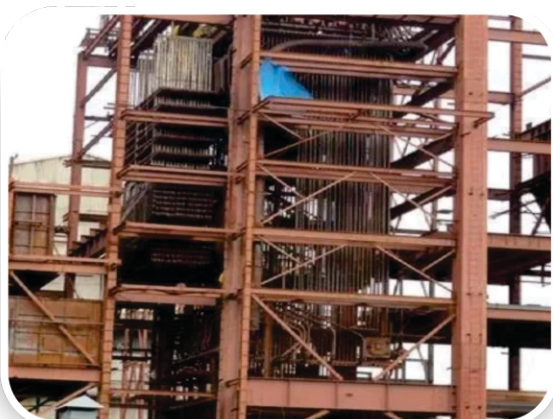
# **BOILER MODIFICATION/ERECTION/REPAIR**



**CAPACITY AND EFFICIENCY  
ENHANCEMENT**



**BOILER MODIFICATION**



**FURNACE MODIFICATION**



**BOILER TUBE REPLACEMENT**



**FUEL FEEDING AUTOMATION**

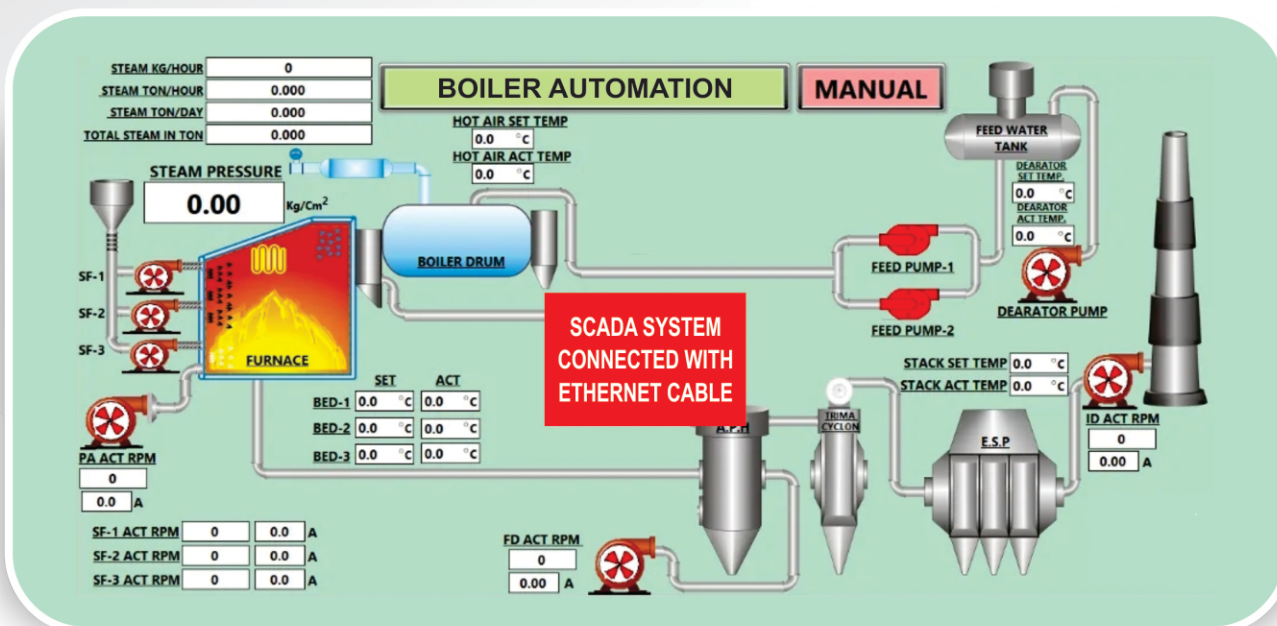


**BIOMASS GRATES**

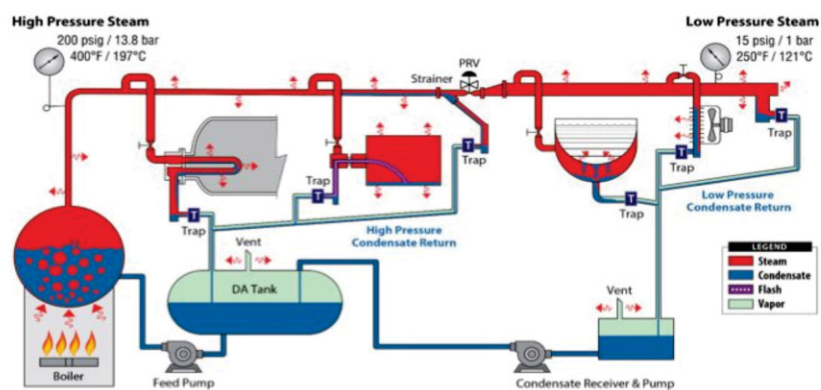
**NOTE : CAPACITY/FUEL/PRESSURE CAN BE CUSTOMISED FOR CUSTOM NEEDS**



# BOILER AUTOMATION AND AUDITING



## OVERHAUL AUTOMATION OF BOILER ROOM WITH SCADA



Pre-Audit

Engineering  
Audit  
&  
Trap Survey

Trap  
Management

Basic  
Design

Detailed  
Engineering

Project  
Implementation

Operation &  
Maintenance

## DESIGNING OF STEAM & CONDENSATE ULD

**NOTE : CAPACITY/FUEL/PRESSURE CAN BE CUSTOMISED FOR CUSTOM NEEDS**



## STEAMTECH ENGINEERING COMPANY

📍 H.O.: C-57, New Focal Point, Amritsar (143002) Punjab

☎ +91 98140-54624, +91-97796-71117

✉ sales@steamtechindia.com 🌐 www.steamtechindia.com

OUR SISTER CONCERNS :

**R L SHARMA & SONS | VSA HI-TECH BOILERS | THE BOILER COMPANY**

📷 steamtechindia    📘 steamtechengineeringcompany    🔗 steamtechengineeringcompany